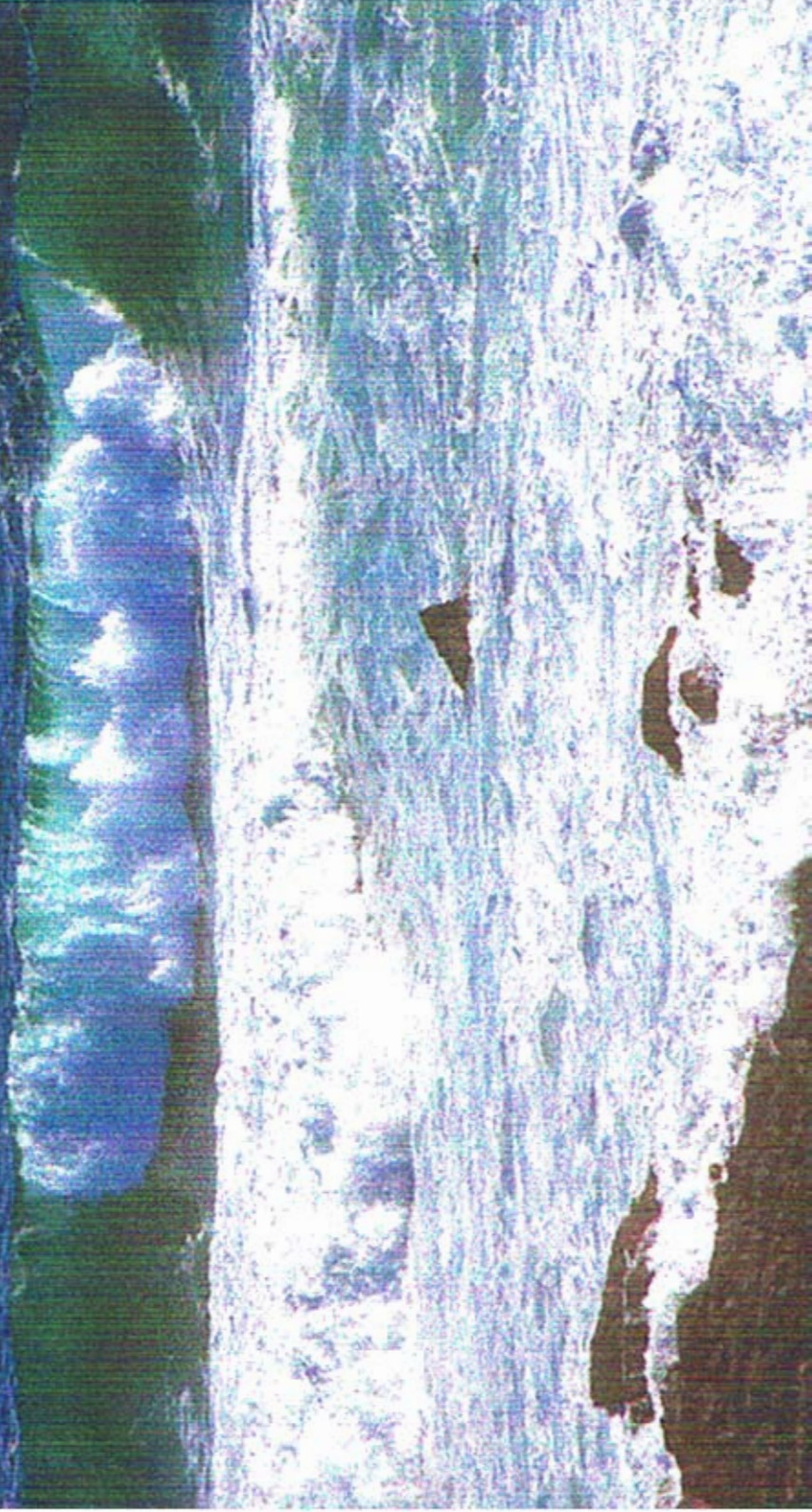
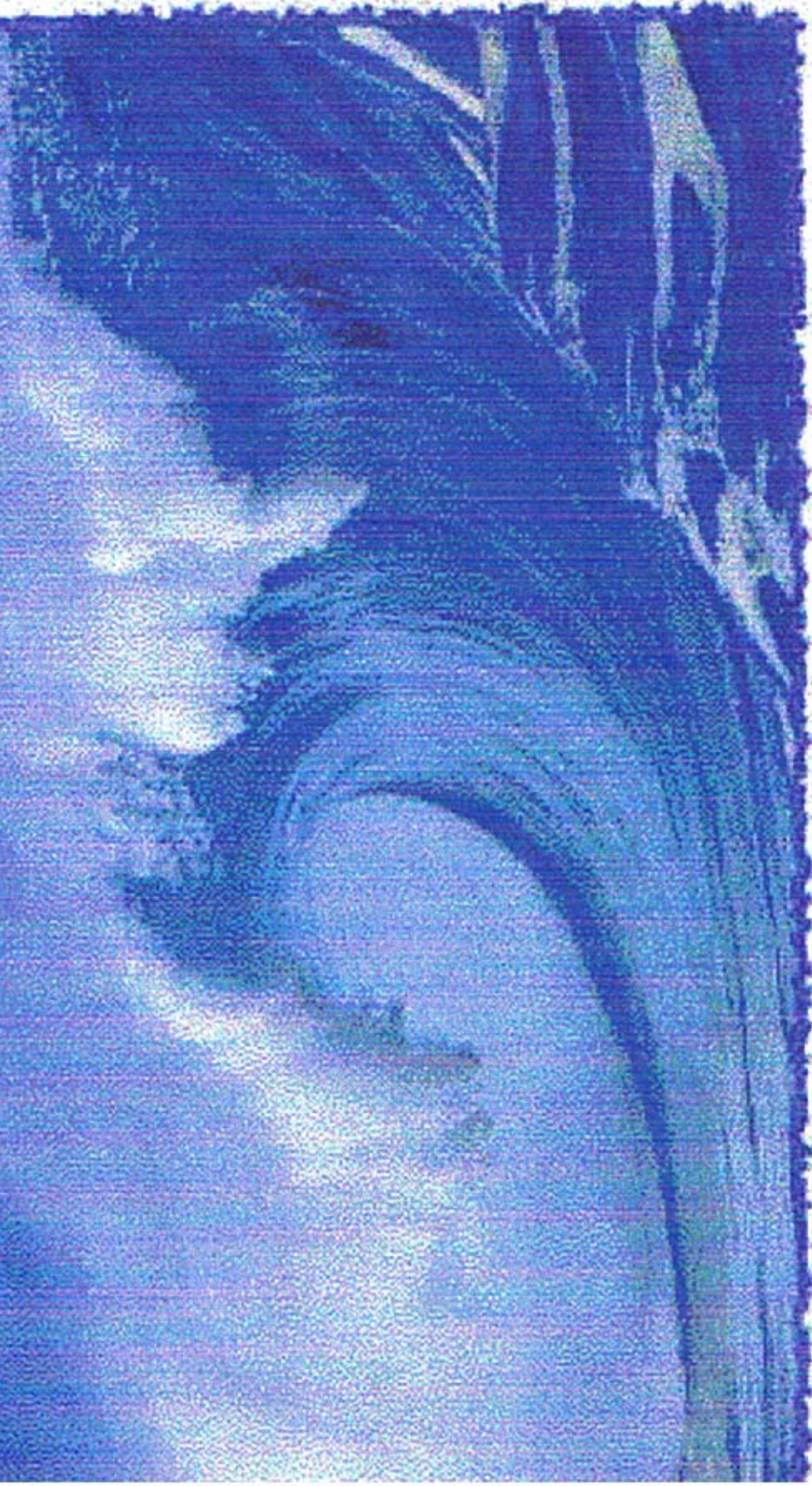


Under The Sea Facts



The ocean is salty water.



The ocean is very, very deep.

Continental Shelf

Average width = 50 miles
varies from a few to 900
miles

Continental Slope

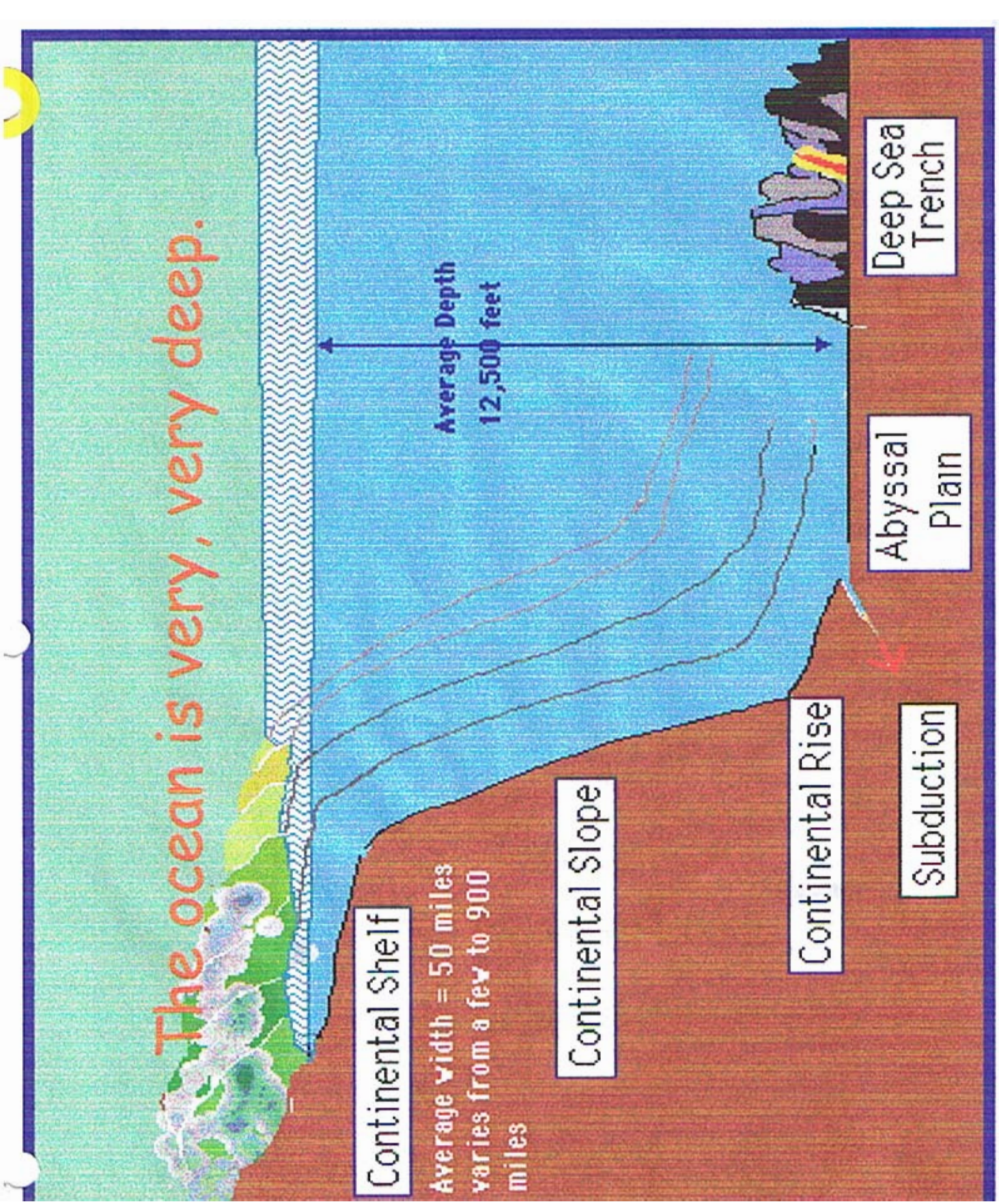
Continental Rise

Subduction

Abyssal
Plain

Deep Sea
Trench

Average Depth
12,500 feet



Oceans are very, very big!



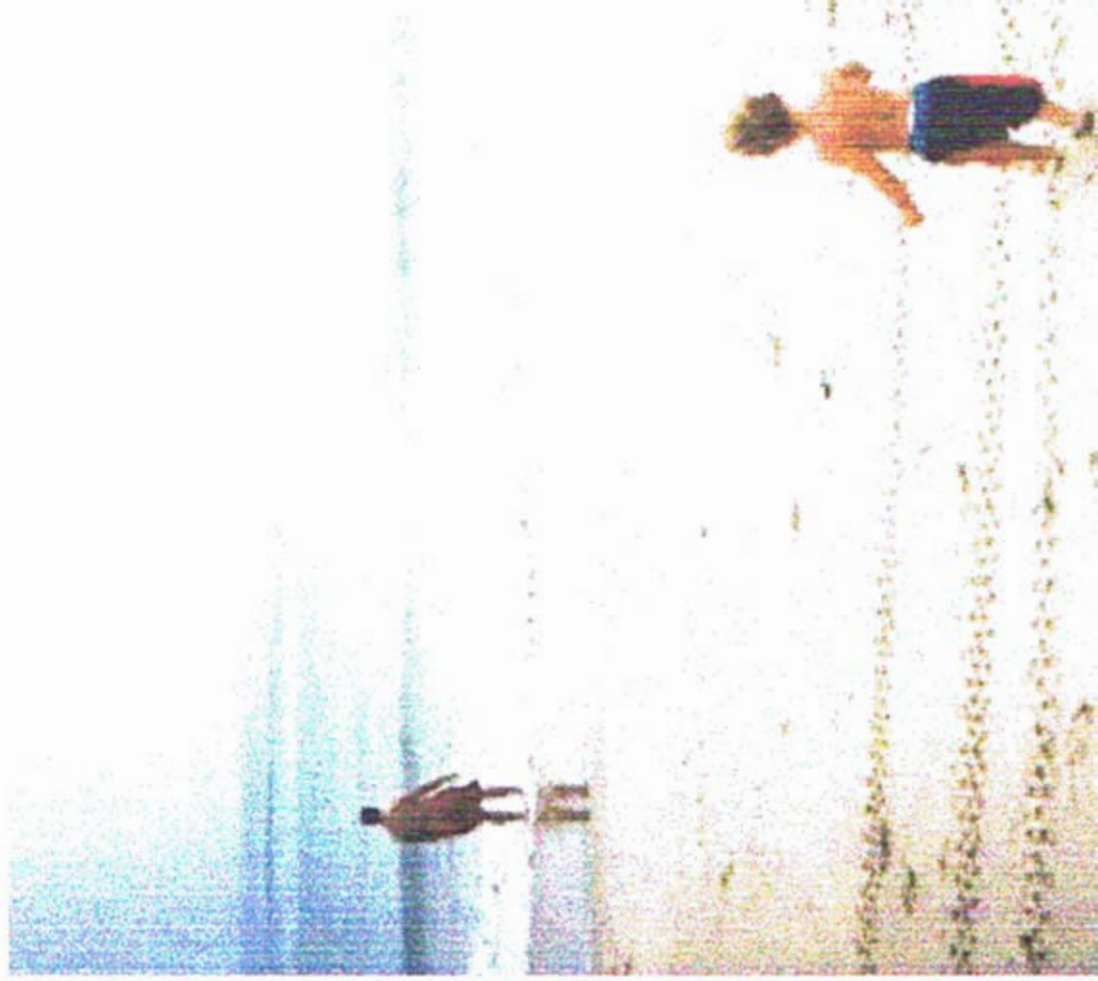
9TH 10TH OF JUNE 06 - Tramore, Co. Waterford, Ireland - visit www.worldoceansfestival.com for more details



It is fun to play and walk on the sandy beach.

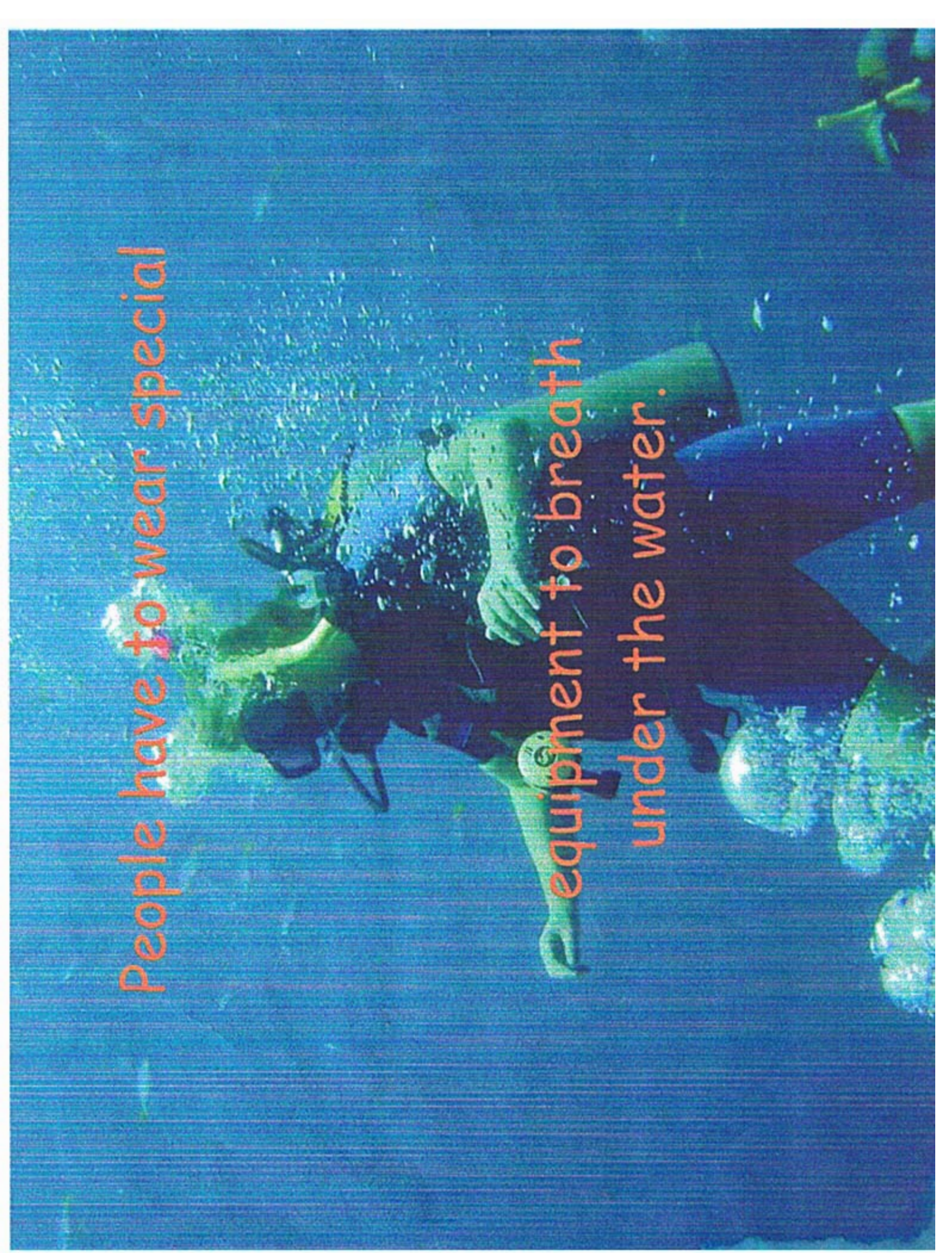


People like to play
in the ocean.



People have to wear special

equipment to breathe
under the water.





Seashells can be found on the sand.

